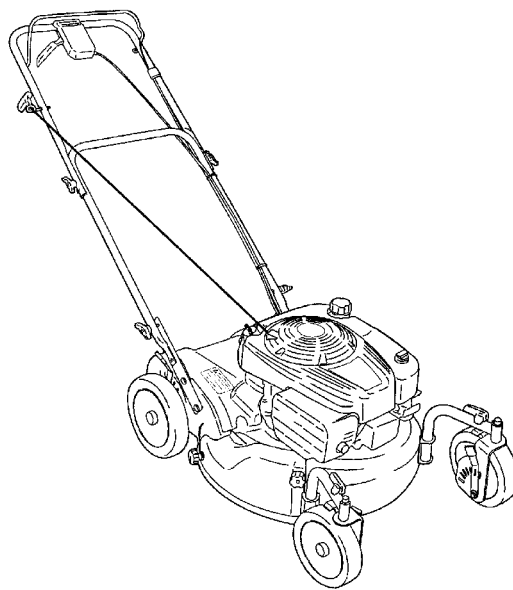




# Parts Manual



## EYPV21675SW

### 21" Walk Behind Mower

#### Attachment

Mfg. No.	Description
7800721	EYPV21675SW, 21" Walk Behind Mower, CE

Manual Part No. 1751823

Revision -

Rev. Date: 11/3/2010

Not for  
Reproduction

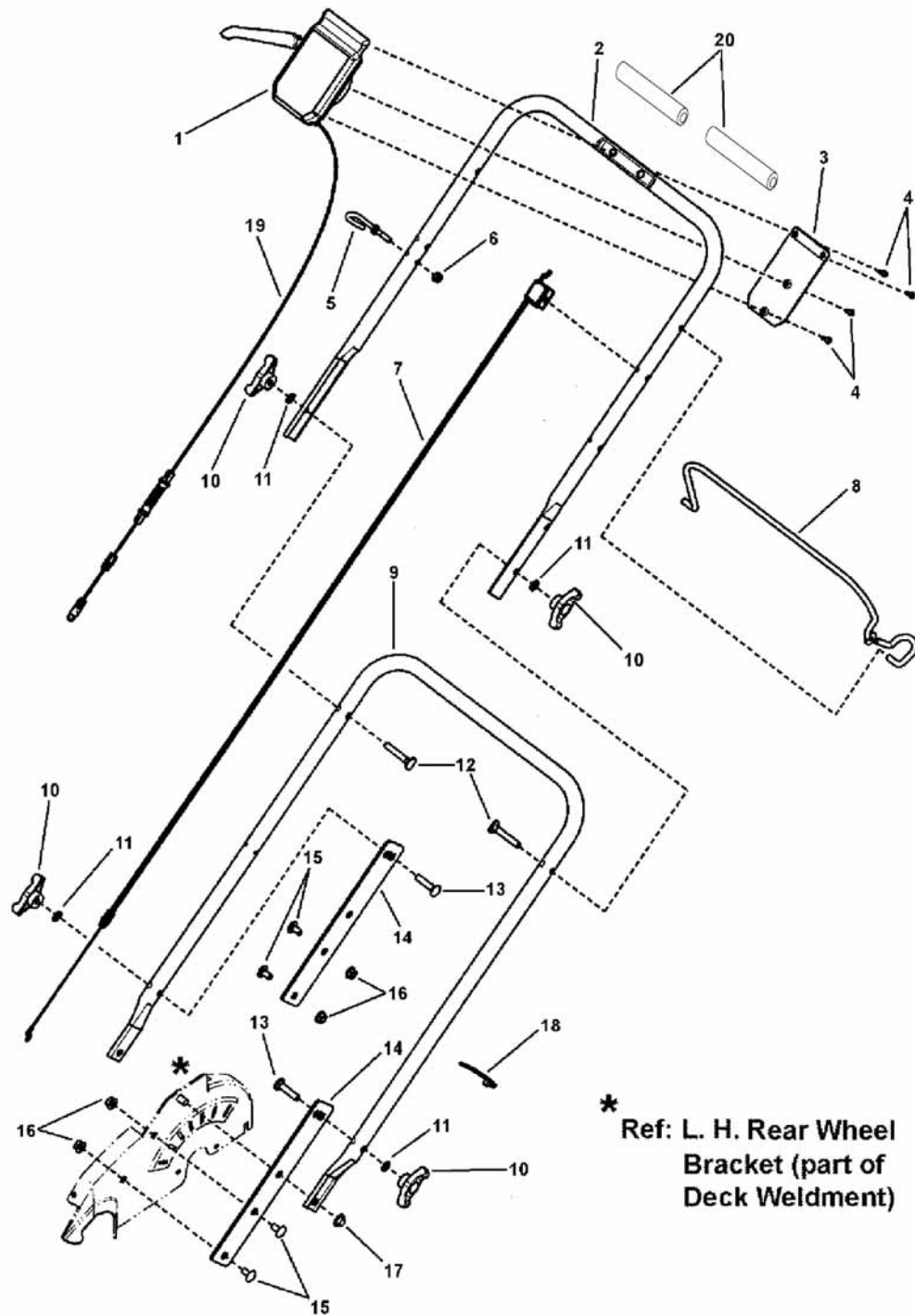
<b>PRODUCT COMPONENTS</b>	<b>PAGES</b>
Handle Group .....	4
Engine & Blade Group .....	6
Transmission Group .....	8
Front Wheels Group .....	10
Rear Wheels Group .....	12
Decals Group .....	14
Deck Group .....	16
<b>Torque Specification Chart .....</b>	<b>Inside Back Cover</b>

Not for  
Reproduction

# Handle Group

NOTE: Unless noted otherwise,  
use the standard hardware torque  
specification chart.

7502129



The above parts group applies to the following Mfg. Nos.:

7800721 - EYPV21675S

## Handle Group

REF NO	PART NO.	QTY.	DESCRIPTION
1	7104003	1	CONTROL HEAD ASSY, VS
2	7078247A	1	HANDLE, Upper
3	7300130A	1	PLATE, Control Panel
4	7100225	4	SCREW, Phillips Head Torx, Twin Helix, #8-16
5	7028488	1	ROPE, Guide
6	7076978	1	NUT, Hex Lock, 1/4-20
7	7100074	1	CABLE, CONTROL, ZONE
8	7101675A	1	BAIL
9	7078246A	1	HANDLE, Lower
10	7035744	4	KNOB, Wing, 5/16-18
11	7090391	4	WASHER, Internal / External Lock, 5/16
12	7091189	2	BOLT, Carriage, Curved Head, 5/16-18 x 2
13	7091612	2	BOLT, Carriage, 5/16-18 x 1-1/2, G5
14	7300103A	2	BRACKET, Handle, Lower
15	7091508	4	BOLT, Carriage, Short Neck, 5/16-18 x 3/4, G5
16	7091601	6	NUT, Hex Flange Lock, 5/16-18, GR5
17	7900066	2	PUSHNUT
18	7024649	2	WIRE TIE
19	7104004	1	CABLE, DRIVE, 21" WBM
20	7102999	2	FOAM GRIP

Not for  
Reproduction

## Footnotes

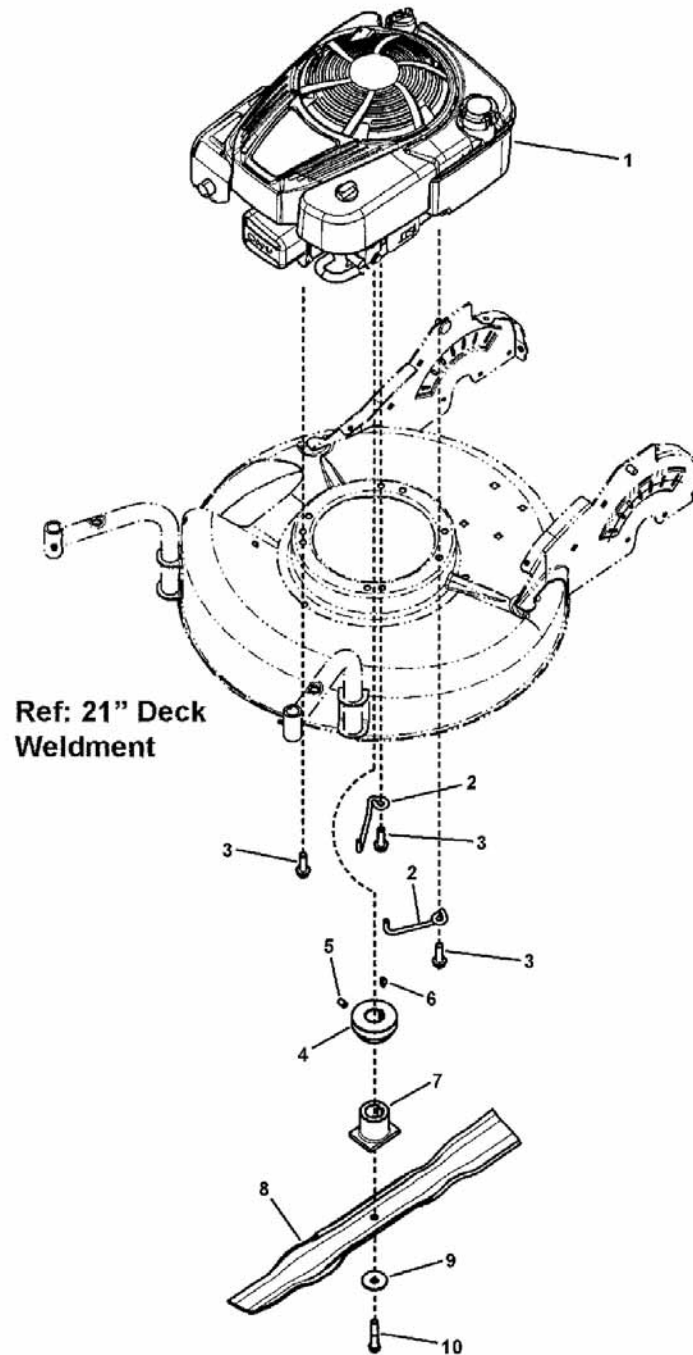
The above parts group applies to the following Mfg. Nos.:

7800721 - EYPV21675S

## Engine & Blade Group

NOTE: Unless noted otherwise,  
use the standard hardware torque  
specification chart.

7502124



The above parts group applies to the following Mfg. Nos.:

7800721 - EYPV21675S

## Engine & Blade Group

REF NO	PART NO.	QTY.	DESCRIPTION
1	126T02-0268-B1	1	* ENGINE, 675 Series Briggs & Stratton (Engine Model: 126T02-0268-B1)
2	7102900	2	GUIDE, Belt
3	7900072	3	SCREW, Hex Washer Head, Self Tap, 3/8-16 x 1-1/4
4	7100437	1	PULLEY, Engine
5	7092086	1	SET SCREW, Hex Recess, 5/16-18 x 1/2
6	7091214	1	KEY, Hi-Pro, #506
7	7101414	1	HUB, Blade
8	7026407	1	BLADE, Ninja
9	7012063	1	WASHER, Cone
10	7090167	1	CAPSCREW, Hex Head, 3/8-24 x 2

Not for  
Reproduction

### Footnotes

Note: \* Purchase engine parts from engine manufacture dealer.

---

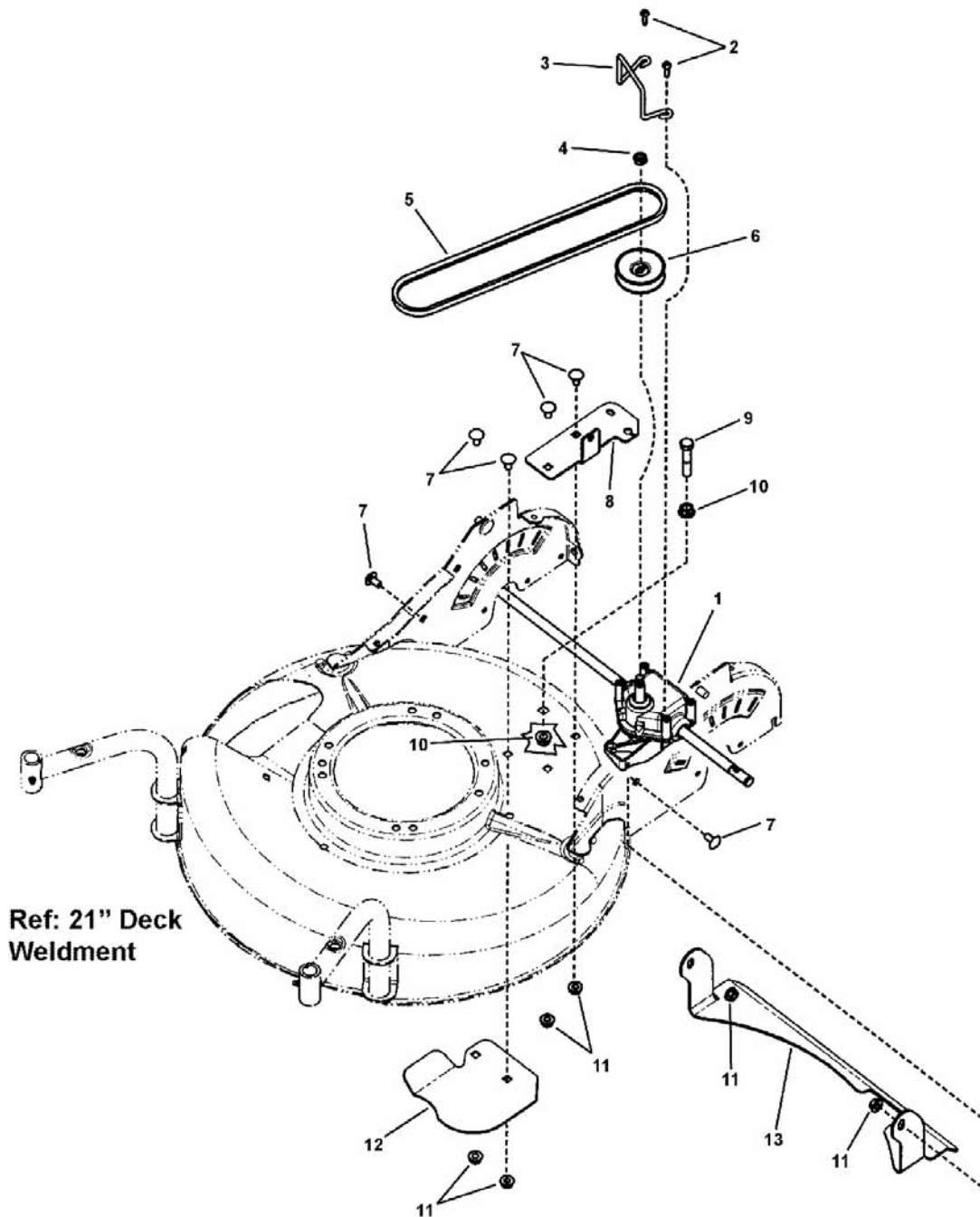
**The above parts group applies to the following Mfg. Nos.:**

7800721 - EYPV21675S

## Transmission Group

NOTE: Unless noted otherwise,  
use the standard hardware torque  
specification chart.

7502130



The above parts group applies to the following Mfg. Nos.:

7800721 - EYPV21675S



## Transmission Group

REF NO	PART NO.	QTY.	DESCRIPTION
1	7100858	1	TRANSMISSION
2	7091195	2	SCREW, Phillips Head, Self Tapping, Combo, #10-16 x 3/4
3	7100863	1	BELT GUIDE, Transmission
4	7091585	1	NUT, Hex, Center Lock, 3/8-16, GR5
5	7100883	1	BELT, Traction Drive, 3L
6	7100240	1	PULLEY, Transmission
7	7090799	4	BOLT, Carriage, Short Neck, 5/16-18 x 5/8, G5
8	7300494A	1	BRACKET, Transmission Mounting
9	7091305	1	CAPSCREW, Hex Head, 3/8-16 x 2, G5
10	7091619	2	NUT, Hex Flange Lock, 3/8-16
11	7091601	4	NUT, Hex Flange Lock, 5/16-18, GR5
12	7300013A	1	SHIELD, Debris
13	7300700C	1	SHIELD, Debris

Not for  
Reproduction

### Footnotes

---

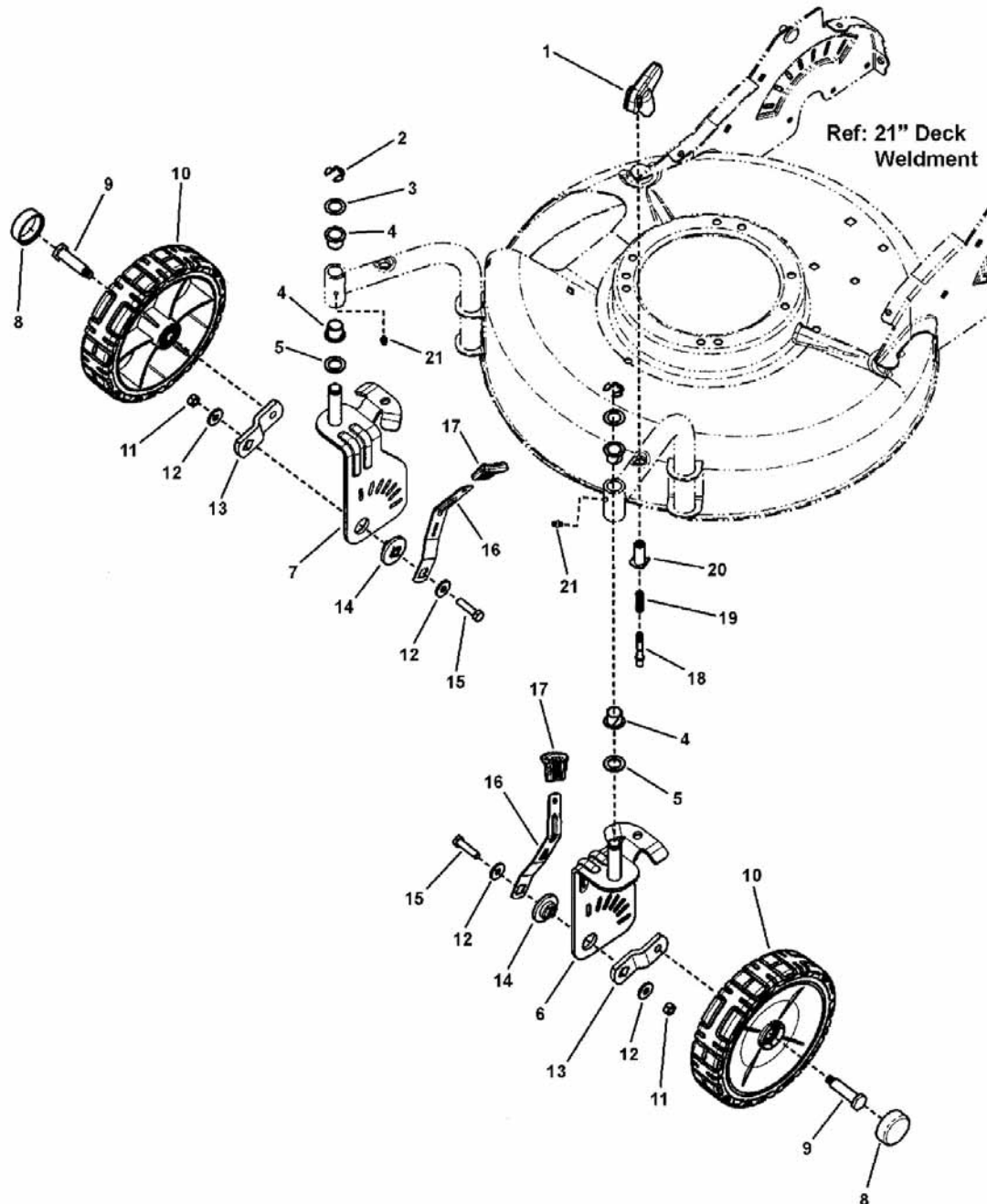
**The above parts group applies to the following Mfg. Nos.:**

7800721 - EYPV21675S

## Front Wheels Group

NOTE: Unless noted otherwise,  
use the standard hardware torque  
specification chart.

7501947



The above parts group applies to the following Mfg. Nos.:

7800721 - EYPV21675S

## Front Wheels Group

REF NO	PART NO.	QTY.	DESCRIPTION
1	7101202	2	KNOB, Quick Release
2	1704420	2	RING, Klipring Ext for .625 Dia. Shaft
3	7092021	2	WASHER, Flat, 5/8 x 1
4	7046628	4	NYLINER, 5/8
5	7091628	2	WASHER, Flat, 5/8 x 1
6	7400293	1	BRACKET, Swivel Wheel, LH
7	7400294	1	BRACKET, Swivel Wheel, RH
8	7101350	2	HUBCAP
9	7101484	2	AXLE, Swivel Wheel, 1-5/8
10	7500540	2	WHEEL, Front, Idle, 8 x 2 (Includes Ref. No. 22)
11	7091575	2	NUT, Hex Center Lock, 5/16-18
12	7900022	4	WASHER, Flat, 7/8
13	7300432	2	AXLE PLATE, Swivel Wheel
14	7100249	2	SPACER, Swivel Wheel Pivot
15	7091527	2	CAPSCREW, Hex Head, 5/16-18 x 1-1/4, G5
16	7100251	2	LEVER, Height Adjust, Swivel Wheel
17	7103793	2	GRIP, Height Latch
18	7101198	2	PIN, Handle Adjust
19	7101200	2	SPRING, Compression
20	7101199	2	BUSHING, Handle Pin
21	7013864	2	LUBE FITTING, 3/16" Press Fit
22	7101380	2	BEARING, Ball, 1-1/8" OD, Flange (Not Illustrated)

Not for  
Reproduction

### Footnotes

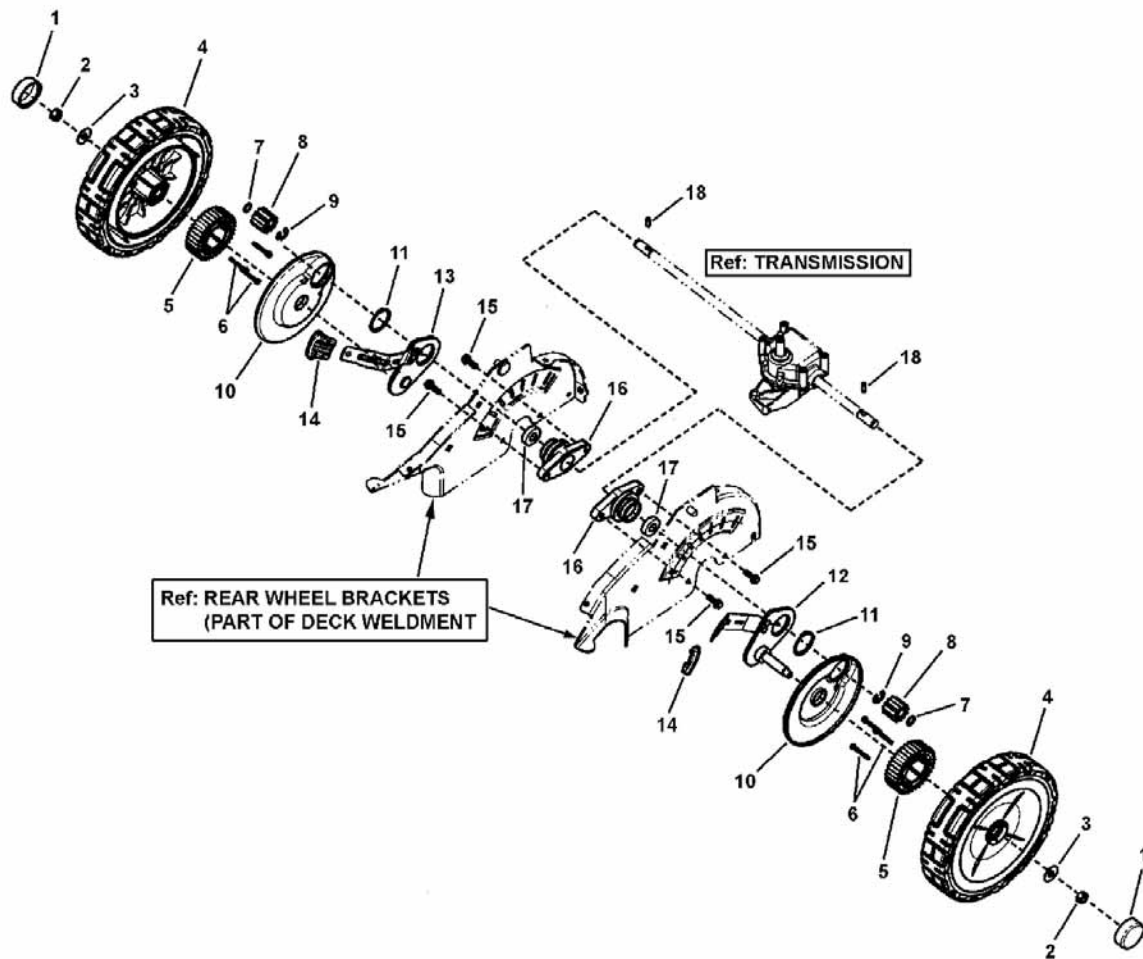
The above parts group applies to the following Mfg. Nos.:

7800721 - EYPV21675S

## Rear Wheels Group

NOTE: Unless noted otherwise,  
use the standard hardware torque  
specification chart.

7501948



The above parts group applies to the following Mfg. Nos.:

7800721 - EYPV21675S

## Rear Wheels Group

REF NO	PART NO.	QTY.	DESCRIPTION
1	7101350	2	HUBCAP
2	7091585	2	NUT, Hex Center Lock, 3/8-16, GR5
3	722604	2	WASHER, Flat, 3/8 ID x 1" OD
4	7500647	1	WHEEL ASSY,W/ BEARINGS,9",SN TRD,CHARCOA (Includes Ref. No. 4A)
4A	7101380	2	BEARING, Ball, 1-1/8" OD, Flange
5	7100914	1	GEAR, External Wheel
6	7091196	3	SCREW, Hex Washer Head, Self Tap, HI-LO, #8 x 1-1/4
7	7027999	2	RING, Retaining
8	7100820	2	GEAR, Pinion
9	7014341	2	RING, Retaining
10	7101367	2	SHIELD, Dust
11	7900010	2	SNAP RING, 1-3/8
12	7500273	1	AXLE ARM ASSEMBLY, Rear, LH
13	7500274	1	AXLE ARM ASSEMBLY, Rear, RH
14	7103793	4	GRIP, Height Latch
15	7090699	4	CAPSCREW, Hex Flange Lock, 1/4-20 x 3/4, G5
16	7078214	1	HOUSING, Axle Bearing
17	7078243	1	BEARING, Ball, Axle
18	7100861	2	PIN, Axle

Not for  
Reproduction

### Footnotes

---

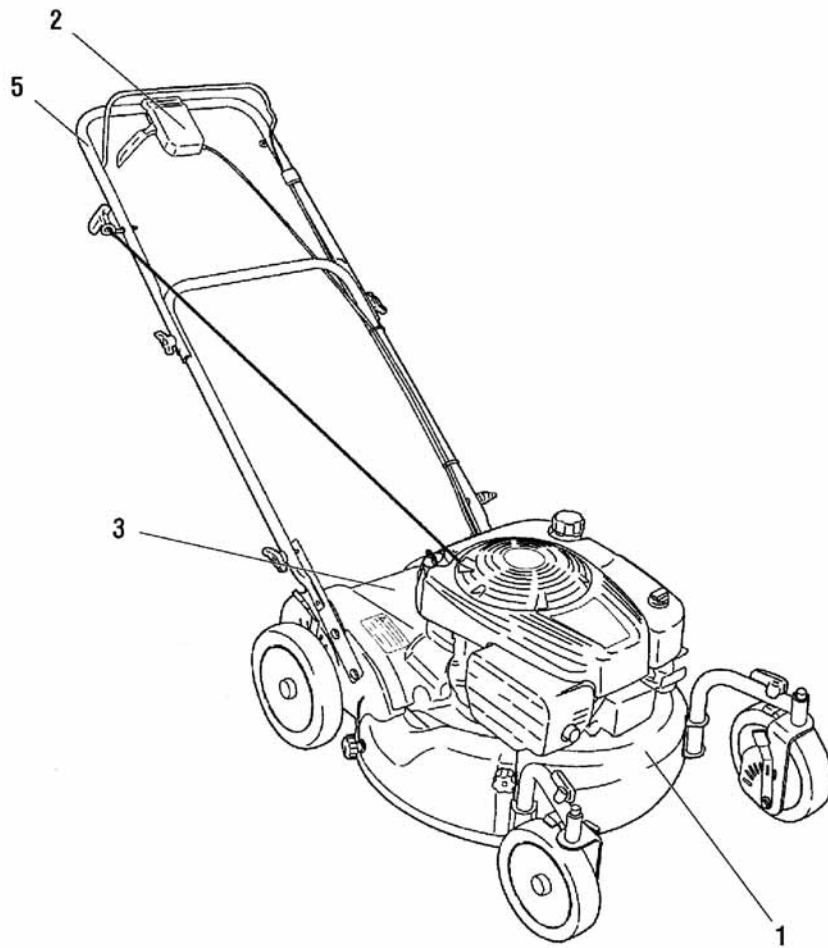
The above parts group applies to the following Mfg. Nos.:

7800721 - EYPV21675S

## Decals Group

NOTE: Unless noted otherwise, use the standard hardware torque specification chart.

7502127



1



3



2



5

The above parts group applies to the following Mfg. Nos.:

7800721 - EYPV21675S

### ***Decals Group***

---

<b>REF NO</b>	<b>PART NO.</b>	<b>QTY.</b>	<b>DESCRIPTION</b>
1	7104494	1	DECAL, Logo
2	7104420	1	DECAL, Control Head
3	7101084	1	DECAL, Warning, Multi-Panel
5	7029782	1	DECAL, Bail

Not for  
Reproduction

### **Footnotes**

---

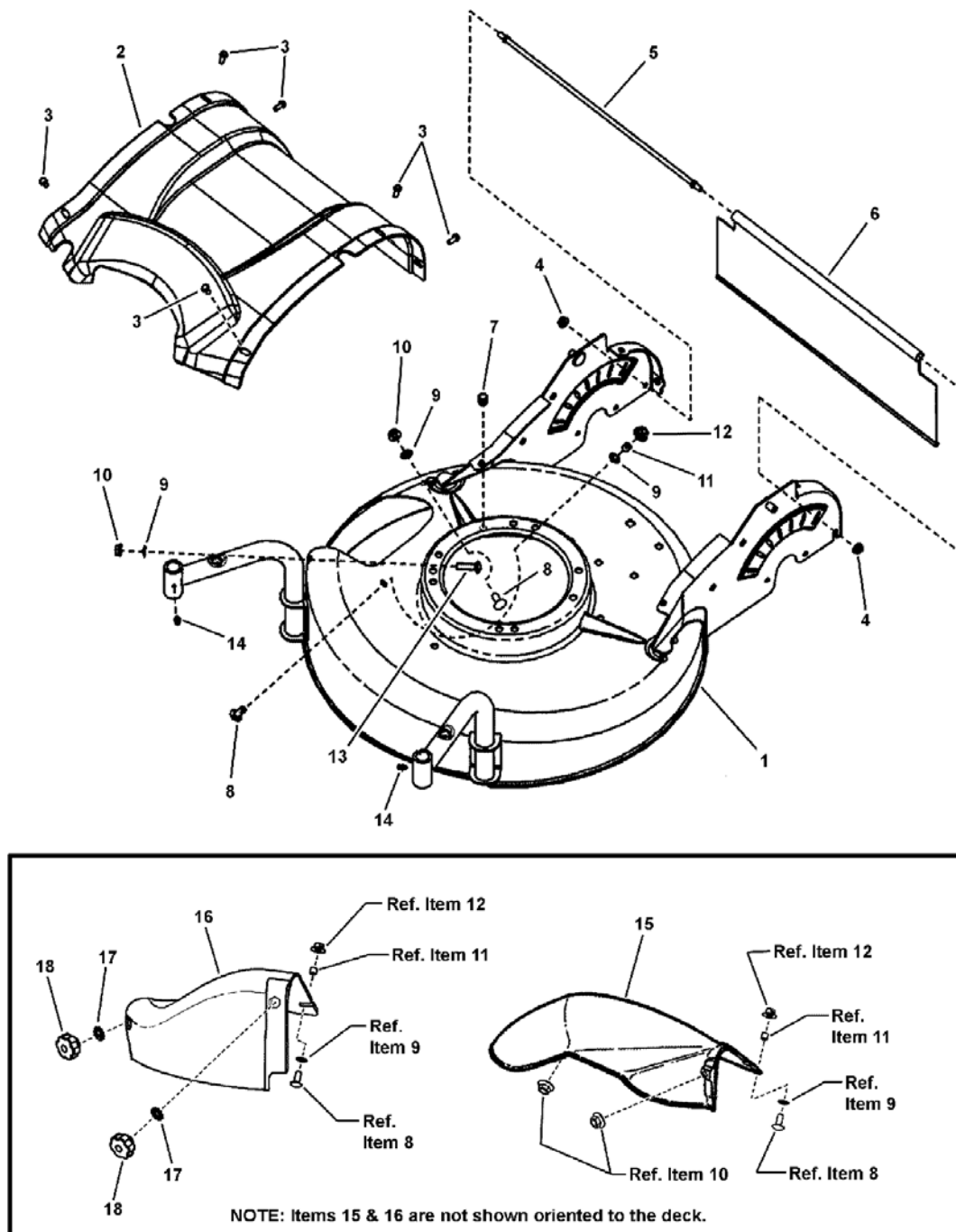
**The above parts group applies to the following Mfg. Nos.:**

7800721 - EYPV21675S

## Deck Group

NOTE: Unless noted otherwise,  
use the standard hardware torque  
specification chart.

7502126



The above parts group applies to the following Mfg. Nos.:

7800721 - EYPV21675S



## Deck Group

REF NO	PART NO.	QTY.	DESCRIPTION
1	----	1	DECK, 21" Swivel Wheel
2	7100001	1	COVER, Rear, Belt / Transmission
3	7900032	6	SCREW, AB Point, 7mm x 1 x 1/2
4	7091584	2	NUT, Hex Flange Lock, 1/4-20
5	7078225	1	ROD, Trail Shield
6	7078272	1	SHIELD, Trail
7	7046780	2	PLUG, Hole
8	7091508	2	BOLT, Carriage, Short Neck, 5/16-18 x 3/4, G5
9	7011791	2	RETAINER, Bolt, 5/16
10	7091601	1	NUT, Hex Flange Lock, 5/16-18, G5
11	7024340	1	SPACER, 3/8 OD x 5/16 ID x 5/16"
12	7090951	3	NUT, Hex, Center Lock, 5/16-18
13	7091169	1	BOLT, Carriage, 5/16-18 x 1-1/8, G5
14	7013864	2	LUBE FITTING, 3/16" Press Fit
15	7042965	1	SIDE CHUTE
16	7029149	1	COVER, Deck
17	7090189	2	WASHER, Internal / External Lock, 5/16
18	7100516	2	KNOB, Fluted (5/16-18 Thread x .633)

Not for  
Reproduction

## Footnotes

The above parts group applies to the following Mfg. Nos.:

7800721 - EYPV21675S

Not for  
Reproduction

# Hardware Identification & Torque Specifications

Torque Specification Chart								
FOR STANDARD METRIC MACHINE HARDWARE (Tolerance ± 20%)								
Property Class	5.6		8.8		10.9		12.9	
	Class 5.6		Class 8.8		Class 10.9		Class 12.9	
Size Of Hardware	in/lbs	Nm.	in/lbs	Nm.	in/lbs	Nm.	in/lbs	Nm.
	ft/lbs		ft/lbs		ft/lbs		ft/lbs	
M3	5.88	.56	13.44	1.28	19.2	1.80	22.92	2.15
M4	13.44	1.28	30.72	2.90	43.44	4.10	52.56	4.95
M5	26.4	2.50	60.96	5.75	5.97	8.10	7.15	9.7
M6	44.64	4.3	7.3	9.9	10.3	14	12.1	16.5
M7	5.2	7.1	12.1	16.5	16.9	23	19.9	27
M8	7.7	10.5	17.7	24	25	34	29	40
M10	15	21	35	48	50	67	59	81
M12	26	36	61	83	86.2	117	103	140
M14	42	58	101	132	136	185	162	220
M16	64	88	147	200	210	285	250	340
M18	89	121	202	275	287	390	346	470
M20	126	171	290	390	405	550	486	660
M22	169	230	390	530	559	745	656	890
M24	217	295	497	375	708	960	840	1140
M27	320	435	733	995	1032	1400	1239	1680
M30	435	590	995	1350	1401	1900	1681	2280
M33	590	800	1349	1830	1902	2580	2278	3090
M36	759	1030	1740	2360	2441	3310	2935	3980
M39	988	1340	2249	3050	3163	4290	3798	5150

Torque Specification Chart						
FOR STANDARD MACHINE HARDWARE (Tolerance ± 20%)						
Hardware Grade	No Marks		SAE Grade 5		SAE Grade 8	
	SAE Grade 2		SAE Grade 5		SAE Grade 8	
Size Of Hardware	in/lbs	Nm.	in/lbs	Nm.	in/lbs	Nm.
	ft/lbs		ft/lbs		ft/lbs	
8-32	19	2.1	30	3.4	41	4.6
8-36	20	2.3	31	3.5	43	4.9
10-24	27	3.1	43	4.9	60	6.8
10-32	31	3.5	49	5.5	68	7.7
1/4-20	66	7.6	8	10.9	12	16.3
1/4-28	76	8.6	10	13.6	14	19.0
5/16-18	11	15.0	17	23.1	25	34.0
5/16-24	12	16.3	19	25.8	29	34.0
3/8-16	20	27.2	30	40.8	45	61.2
3/8-24	23	31.3	35	47.6	50	68.0
7/16-14	30	40.8	50	68.0	70	95.2
7/16-20	35	47.6	55	74.8	80	108.8
1/2-13	50	68.0	75	102.0	110	149.6
1/2-20	55	74.8	90	122.4	120	163.2
9/16-12	65	88.4	110	149.6	150	204.0
9/16-18	75	102.0	120	163.2	170	231.2
5/8-11	90	122.4	150	204.0	220	299.2
5/8-18	100	136	180	244.8	240	326.4
3/4-10	160	217.6	260	353.6	386	525.0
3/4-16	180	244.8	300	408.0	420	571.2
7/8-9	140	190.4	400	544.0	600	816.0
7/8-14	155	210.8	440	598.4	660	897.6
1-8	220	299.2	580	788.8	900	1,244.0
1-12	240	326.4	640	870.4	1,000	1,360.0

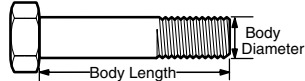
The guides and ruler furnished below are designed to help you select the appropriate hardware.



Nut, M8

Thread Diameter (mm)  
Inside Diameter (in)  
Threads per inch

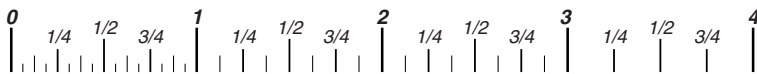
Nut, 1/2-16



Screw, M8- 1.25 x 25

Thread Diameter (mm)  
Body Diameter  
Distance between threads (mm)  
Threads per inch  
Body Length (mm)  
Body Length (in)

Screw, 1/2- 16 x 2



## Standard Hardware Sizing

When a washer or nut is identified as **1/2"** (M8), this is the *Nominal size*, meaning the *inside diameter* is 1/2 inch (8mm metric thread diameter); if a second number is present it represents the *threads per inch* (distance between threads).

When bolt or capscrew is identified as **1/2 - 16 x 2"** (M8 - 1.25 x 50 ), this means the *Nominal size*, or body diameter is 1/2 inch (8mm metric thread diameter), the second number, 16, represents the *threads per inch*, (1.25 thread diameter). The final number is the body length of the bolt or screw, 2 inches (50mm).

## NOTES

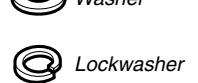
- These torque values are to be used for all hardware excluding: locknuts, self-tapping screws, thread forming screws, sheet metal screws and socket head setscrews.
- Recommended seating torque values for locknuts:
  - for prevailing torque locknuts - use 65% of grade 5 torques.
  - for flange whizlock nuts and screws - use 135% of grade 5 torques.
- Unless otherwise noted on assembly drawings, all torque values must meet this specification.

## Common Hardware Types

Hex Head Capscrew



Washer



Carriage Bolt



Hex Nut

## Wrench & Fastener Size Guide

1/4" Bolt or Nut Wrench—7/16"	5/16" Bolt or Nut Wrench—1/2"	3/8" Bolt or Nut Wrench—9/16"	7/16" Bolt or Nut Wrench (Bolt)—5/8" Wrench (Nut)—11/16"	1/2" Bolt or Nut Wrench—3/4"
M6 Bolt or Nut Wrench—10mm	M8 Bolt or Nut Wrench—13mm	M10 Bolt or Nut Wrench—17mm	M12 Bolt or Nut Wrench—19mm	M14 Bolt or Nut Wrench—22mm

Not for  
Reproduction

**IT IS THE POLICY OF BRIGGS & STRATTON CORP. TO IMPROVE ITS PRODUCTS  
WHENEVER IT IS POSSIBLE AND PRACTICAL TO DO SO. WE RESERVE THE RIGHT TO  
MAKE CHANGES OR ADD IMPROVEMENTS AT ANY TIME WITHOUT INCURRING ANY  
OBLIGATION TO MAKE SUCH CHANGES ON PRODUCTS.**

**Briggs & Stratton Yard Power Products Group**

---

3515 N. 124 Street / PO Box 702  
Wauwatosa, WI 53222 USA

[www.simplicitymfg.com](http://www.simplicitymfg.com)

© Copyright 2010 by Briggs & Stratton Corporation  
Milwaukee, WI, USA. All rights reserved